

Amazing 韩国
KOREA 韩国

7D4N

首尔/南怡岛/雪岳山

SEOUL/NAMI ISLAND/MOUNT SORAK

Tour Code: DZP-17

 **Golden**[®]
Destinations



Korea
韩国



Everland
爱宝乐园



SEOUL SKY Observatory
SEOUL SKY 观景台

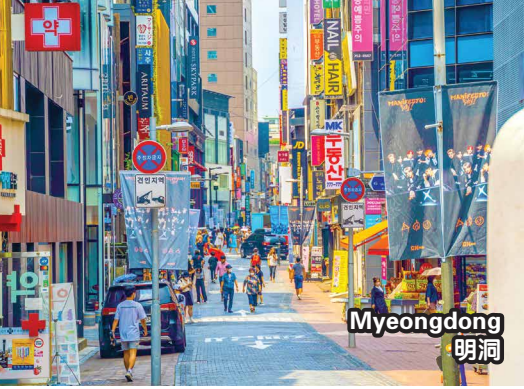


Mt. Sorak
雪岳山



Gyeongbok Palace
景福宫

行程次序，以当地旅社安排为准。
Sequences of Itinerary are subject to local arrangement.



Myeongdong
明洞



The Painters HERO Show
HERO 涂鸦秀



Coex Mall
星空图书馆

SCHEDULE

D1 DEPARTURE ✈ INCHEON

D2 ARRIVAL INCHEON 🚌 SEOUL 🚌 MT. SORAK (MOB/L/D)

- ☑ The Garden of Morning Calm
- ☑ Nami Island

D3 MT. SORAK 🚌 YONGIN (B/L/-)

- ☑ Mt. Sorak National Park
- ☑ Sinheungsa Temple
- ☑ Kwengumseong Fortress
(By cable car - subject weather conditions)
- ☑ Everland (Passport Ticket with unlimited ride)

D4 YONGIN 🚌 SEOUL (B/L/D)

- ☑ Seaweed Museum
(Kimchi & Seaweed DIY Experience)
- ☑ SEOUL SKY Observatory (Floor 117-120)
- ☑ Coex Mall Starfield Library
- ☑ The Painters HERO Show

D5 SEOUL (B/L/-)

- ☑ Wearing Hanbok visit Gyeongbok Palace
(Closed on Tuesday, replace by Deoksugung Palace)
- ☑ Presidential Blue House (Pass by)
- ☑ National Folk Museum
- ☑ Myeongdong + Duty Free

D6 SEOUL 🚌 INCHEON ✈ DEPARTURE (B/-/D)

- ☑ Namsangol Hanok Village
- ☑ Ikseon-dong
- ☑ Hongdae Shopping Street
- ☑ Local Food Product

D7 ARRIVAL (MOB)



✓ 4 Breakfast / 4 Lunch / 3 Dinner

Special Cuisine:

- ★ Korea Jokbal (Pork Trotters)
- ★ Chicken Dakgalbi
- ★ Bibimbap
- ★ Korean + International Buffet
- ★ Stew Squid & Pork
- ★ Ginseng Chicken
- ★ Korean BBQ Buffet

TOURIST ATTRACTIONS:

SEOUL

- ◆ **Gyeongbok Palace** - built in 1395, Gyeongbokgung Palace is also commonly referred to as the "Northern Palace" because it is the furthest north when compared to the neighboring palaces, Gyeongbokgung Palace is arguably the most beautiful and remains the grandest of all five palaces.
- ◆ **SEOUL SKY Observatory (Floor 117-120)** - is located at the top of the Lotte World Tower, which is the third highest in the world at 500 meters, the 123rd floor and 555 meters high in South Korea. As the highest peak in South Korea, it offers a 360-degree panoramic view that contains the most glorious history and richness of the Republic of Korea. Seoul, the capital of dynamic modern culture, has a panoramic view. Take the fastest elevator in the world, with a speed of up to 600 meters, and feel the illusion of traveling through time and space. You can go to the observation deck on the 118th floor with a transparent glass floor, and then go to the sky terrace on the 120th floor to enjoy the beautiful city view of Seoul.
- ◆ **Coex Mall Starfield Library** - The most beautiful library. Offers visitors a perfect reading space. The two-story library has 13-meter-tall bookshelves and soft lights to ease the eyes as well as various types of tables with electric plugs for those with laptops. With more than 50,000 books ranging from literature to hobbies as well as over 400 types of magazines, visitors are welcome to find pleasure in reading and relax.
- ◆ **The Painters HERO Show** - HERO is an art performance that subverts everyone's imagination. The entire process of painting on stages combined with incredible visual effects and a witty blend of mime, dance and comedy. Audiences enjoy a play, an art show, and a musical performance through an 80-minute, excitement-filled show.

GANGWON-DO

- ◆ **The Garden of Morning Calm** - a 30,000 m² garden, is open year-round and is a great spot to visit for families, couples, and photographers alike. The garden is the oldest private garden in Korea. It is an artistic space with a beautiful balance between the Korean concept of natural curves with asymmetry, and plants with synthetic materials.
- ◆ **Nami Island** - the place was famous for its beautiful tree lined roads, the filming site of the popular Korean drama serial - "Winter Sonata".

MT. SORAK

- ◆ **Mt. Sorak National Park** - we will visit Sinhun Temple, which reflects the harmonization of nature and music. Ascend to the summit by cable car (subject to weather conditions). Walk to the impressive Kwengumseong Fortress which commands an excellent view of the Outer Sorak region.

GEONGGI-DO

- ◆ **Everland** - It is ranked as the 4th theme park in the world by offering 5 main Festivals and exciting entertainments all year around.



HOTEL OR SIMILAR (4 NIGHTS)

- ✓ Hanwha Resort or similar class x1 Night
- ✓ Ramada By Wyndham/Hanwha Resort Yongin or similar class x1 Night
- ✓ Fairfield By Marriott Seoul Hotel/Sollago Myeongdong Hotel or similar class x2 Nights

SHOPPING STOP

- ✓ Ginseng Outlet
- ✓ Cosmetics Shop
- ✓ Liver Supplement Shop

Disclaimer: Golden Destinations reserved the right to alter the sequence or change, amend or alter the itinerary if necessary, with or without prior notice.

Remark: There will be no refund or replacement if the tour logistic affected by the above issue. All pictures are for illustration purpose only.



Wearing Hanbok visit Gyeongbok Palace
穿韩服游景福宫



Nami Island
南怡岛



The Garden of Morning Calm
晨静树木园



精简行程

第一天 启程 ✈️ 仁川

第二天 抵达仁川 🚌 首尔 🚌 雪岳山
(机上用餐/午/晚)

- ☑️ 晨静树木园
- ☑️ 南怡岛

第三天 雪岳山 🚌 龙仁 (早/午/-)

- ☑️ 雪岳山国家公园
- ☑️ 新兴寺
- ☑️ 权金城 (含缆车, 视气候而定)
- ☑️ 爱宝乐园 (自由卷)

第四天 龙仁 🚌 首尔 (早/午/晚)

- ☑️ 紫菜博物馆 (DIY泡菜和紫菜)
- ☑️ SEOUL SKY 观景台 (第117-120层)
- ☑️ 星空图书馆
- ☑️ HERO涂鸦秀

第五天 首尔 (早/午/-)

- ☑️ 穿韩服游景福宫 (周二关馆, 改为参观德寿宫)
- ☑️ 途经青瓦台
- ☑️ 国立民俗博物馆
- ☑️ 明洞 + 免税店

第六天 首尔 🚌 仁川 ✈️ 回程 (早/-/晚)

- ☑️ 南山谷韩屋村
- ☑️ 益善洞文青胡同
- ☑️ 弘大商圈
- ☑️ 土产店

第七天 抵达 (机上用餐)



✓ 4早餐 / 4午餐 / 3晚餐

风味餐：

- ★ 韩式猪蹄
- ★ 韩式拌饭
- ★ 鱿鱼鲜肉锅
- ★ 烤肉自助餐
- ★ 春川铁板鸡
- ★ 韩式+国际自助餐
- ★ 人参炖鸡

观光景点：

首尔

- ◆ **景福宫** - 是李朝 (1392-1910年) 时期首尔的五大宫之一, 也是李氏王朝的正宫, 具有500年历史。景福宫是李朝的始祖一太祖李成桂 (1392-1398年在位) 于1395年将原来高丽的首都迁移时建造的新王朝的宫殿。
- ◆ **SEOUL SKY 观景台 (第117-120层)** - 瞭望台位于世界第三, 500M、韩国最高123楼、全高555米的乐天世界塔的最高顶尖, 作为韩国境内最高顶峰, 可以360度全景将蕴涵大韩民国最灿烂历史和充满活力之现代文化的首都首尔尽收眼底、一览无余。乘坐世界上最快的电梯, 分速高达600米, 感受穿越时空的错觉, 到118楼观景台还有透明玻璃地板, 再到120楼的天空露台, 欣赏首尔绝美市景。
- ◆ **星空图书馆** - 号称韩国首尔超浪漫「星空图书馆」巨型书架惊为天人。室内是相当宽敞的开放式空间, 官方公开总面积有2800平方公尺, 这间图书馆最大特色就是高达13公尺的3座大型书架, 围绕著大家, 彷彿走进了童话世界般美妙, 以及5万多本的书籍与杂志, 也拥有最新设备电子书系统, 方便大家查看阅览, 杂志区也提供600多种海内外最新内容供人阅读。
- ◆ **HERO人气涂鸦秀** - HERO是一场颠覆大家想像的美术表演, 将作画过程原封不动地搬上舞台, 接呈现观众面前。不仅是韩国第一个美术表演, 也是世界首例。把艺术与戏剧、音乐剧结合在约80分钟的表演中, 演员会将作画的过程完整呈现给观众。

江源道

- ◆ **晨静树木园** - 是一座被鲜花铺盖的面积达33万m²大型庭院。这里常年鲜花盛开, 松树林立, 在恬静地享受着山林浴的同时, 还能欣赏到各种各样的野生花卉。
- ◆ **南怡岛** - 韩剧《冬季恋歌》男女堕入爱河的外景拍摄地。漫步于罗曼蒂克的林荫道。参观剧情介绍和不同的拍摄点。

雪岳山

- ◆ **雪岳山国家公园** - 游览新兴寺青铜座佛像, 称为统一大佛, 经历11年完成, 是韩国最大的青铜佛像。然后乘缆车登上权金城观赏优美的风景。(缆车视气候而定)

京畿道

- ◆ **爱宝乐园 (自由卷)** - 集动物园, 游乐园, 雪橇场, 植物园等在内的韩国大型主题公园。



酒店住宿 (4晚)

- ✓ 韩华度假酒店或同级 x1晚
- ✓ 龙仁市华美达/韩华酒店或同级 x1晚
- ✓ 首尔万枫酒店/Sollago Myeongdong 酒店或同级 x2晚

购物店

- ✓ 人参公卖局
- ✓ 韩国化妆品
- ✓ 护肝宝专卖店

免责声明：必要时黄金旅程保留对行程进行适当调整 (调整景点游览顺序) 以确保行程顺利进行, 会或否事先通知。
备注：如果旅游行程受到上述问题的影响, 将不予退款或更换。图片仅供参考。

• 韩国 SOUTH KOREA •



货币 Currency 	SOUTH KOREAN WON - KRW 韩币 - KRW	信用卡 Credit Card 	* 许多信用卡在韩国都能通行 * Credit cards are used widely in South Korea card are mostly widely used.
货币兑换率 Exchange Rate 	KRW 1000 = MYR 3.80 1000 韩币 = 马币 3.80 <small>*Subject to currency of the day* *以当天汇率为准*</small>	拨号代码 Dial Code 	SOUTH KOREA : +82 韩国 : +82
电压 Voltage 	Voltage - almost always 220 V 电压 - 220伏特	插座 Power Socket 	2 Round pins *Please bring a universal electric plug adapter 两个圆脚头插座 * 请自带多功能插座
时差 Time Different 	South Korea is 1 hour ahead of Malaysia 韩国标准时差快马来西亚时间1小时	行李托运 Luggage Allowance 	Each individual are entitled to check in 1 luggage of not more than 20kg and a hand carry bag not more than 7kg. 每人只限携带一件不超过7公斤的手提行李上机, 以及托运行李不超过20公斤
气候 Weather 	<input type="checkbox"/> Spring 春季 03月 - 05月 Mar to May 24°C - 10°C <input type="checkbox"/> Summer 夏季 06月 - 08月 Jun to Aug 30°C - 15°C <input type="checkbox"/> Autumn 秋季 09月 - 11月 Sep to Nov 20°C - 10°C <input type="checkbox"/> Winter 冬季 12月 - 02月 Dec to Feb 7°C - -8°C <small>*Subject to weather of the day* *以当天天气报告为准*</small>		
飞机型号 Aircraft Type 	A330 Boeing 777/748		

Departure Date: 出发日期: <input type="text"/>	Flight : 航班行程: <input type="text"/>
Tour Fare: 团费: <input type="text"/>	Airport Tax & Fuel Surcharge: 机场税及燃油附加费: <input type="text"/>
Tipping: 小费: <input type="text"/>	Agent Collection Fee: 旅行社代收费: <input type="text"/>
Visa: 签证: <input type="text"/>	Travel Insurance: 旅行保险: <input type="text"/>
	TOTAL : 总数: <input type="text"/>

GD Partner:

