

THE SIGNATURE

BY  PREMIUM TOUR

5D
4N

THE PREMIUM LANDSCAPE GALLERY OF **GUILIN**

YANGSHUO | LONGSHENG | SANJIANG

山水画廊桂林高端之旅

阳朔 | 龙胜 | 三江



NO COMPULSARY OPTIONAL, NO SHOPPING STOP, NO SELLING IN COACH

ASIA

Ruyi Peak
如意峰

goldendestinations.com

Tour Code: 5SCKWL

S-Class Journey, Signature Memories



全心服务 难忘体验



The GD Premium Team embraces your journey with unwavering authenticity, methodically crafting every nuance. Our service stems from the core, characterized by a client-first professionalism, providing wholehearted and adept planning. GD Premium团队满怀真诚，为您的旅程精心雕琢每个细节。我们的服务源自核心，以客户至上的专业精神为特征，提供全心全意和熟练的规划。



Professional Team

专业旅游团队

Our people are certified travel professionals who have over years of experience. Every staff undergoes extensive customer service and quality assurance training.

我们的团队是经过认证的旅游专业人员，拥有超过多年的经验。每位员工都接受了广泛的客户服务和质量保证培训。



Exclusive & Meticulous Route Planning

独家精心策划

Our Exclusive & Meticulous Route Planning ensures every journey is tailored to your dreams and designed with meticulous care. It may provide you with an unforgettable journey!

带您一起用以前所未有的方式来探索世界。我们会提供独家细致的路线规划，确保每一次旅程都根据您的梦想专门定制，让您拥有难以忘怀的旅程体验！



Accommodation

住宿

We have always embraced the concept of 'home away from home' when selecting hotels. We often go to great lengths to meticulously assess factors such as room types, geographical locations, and even the views available from within the rooms, all to ensure that we provide you with an accommodation experience that meets the standards. Our aim is to make your journey feel as comfortable as being at home. Typically, our first choice is 4-star and 5-star hotels, as they often meet our expectations for good quality accommodation.

我们一直秉承着宾至如归的理念来挑选酒店。我们经常以酒店的房型、地理位置，甚至房内可欣赏到的景色来尽心筛选，以确保为您提供最符合标准的住宿体验，让您在旅途中也能感受到如同在家一般的舒适。通常4星和5星级酒店都是我们的首选，因为它们往往能达到我们对好质量住宿的要求。





Sanjiang Bird's Nest
三江鸟巢

5D 4N

THE PREMIUM LANDSCAPE GALLERY OF GUILIN

YANGSHUO | LONGSHENG | SANJIANG

DAY 01 KUL ✈️ GUILIN

(MOB/LL/LD)

- Arrive in Guilin, renowned as the natural beauty and landscape wonders.
- Check in to the **Steigenberger Guilin Hotel** and enjoy the picturesque sunset. Immerse yourself in mountain and water landscapes, resembling a scroll.

DAY 02 GUILIN - 74KM - YANGSHUO

(HB/LL/LD)

- 🏠 • **Shiwai Taoyuan** (Includes cruise) - is a folk scenic area built according to the artistic conception depicted in Tao Yuanming's *«Peach Blossom Spring»* and combined with the local pastoral landscape scenery.
- 🕒 • **Ruyi Peak Scenic Area**: Through the cable car, viewing platform, Ru yi Cable Bridge, glass sky-walks, and other creative viewing facilities, so that you can overlook the peak forest, enjoy the "sky garden", experience the "New Play-style of the Shilihualang".
- 🕒 • **Bamboo Rafting on the Yulong River** (VIP 2 pax/rafts): With the rafts pole by pole, accompanied by the ripples on the river. The peaks are layered as if a picture scroll is unfolding in front of your eyes, which is very beautiful.
- Experience *«Qiangquqing»* (VIP seat), a world-renowned show in Guilin, staged on water. With stunning landscapes and lighting, it highlights Guilin's unique beauty and rich history through music, dance, and singing.

DAY 03 YANGSHUO - 170KM - LONGSHENG - 65KM - SANJIANG

(HB/LL/LD)

- 📷 • **Longji Terraces**: These terraces which nearly 800 meters above sea level and resemble cascading grassy steps, were originally constructed by farmers during the Yuan Dynasty.

Remarks:

- Spring (March-May): Green terraces, hard-working farmers.
- Summer (June-August): Golden rice, the harvest season.
- Autumn (September-November): Golden autumn scenery, harvest season.
- Winter (December-February): Covered in white frost, it resembles a fairyland in tranquility.

Each season presents its unique scenery and charm. It's important to note that these landscapes may vary due to climate and uncontrollable factors.

- **Huangluo Yao Village** (Includes show): Among the 60 households in the entire village, 60 women have hair longer than one meter, with the longest reaching 1.7 meters. Therefore, it is known as the world's first long hair village.
- 🕒 • **Sanjiang Bird's Nest** (Includes live show): a distinctive architectural structure resembling a bird's nest, the entire building radiates an ancient and unique ethnic flavor. It inherits the architectural tradition of the Ganlan style.

DAY 04 SANJIANG - 142KM - GUILIN

(HB/LL/LD)

- 🕒 • **Chengyang Bazhai**: It consists of eight villages. One of the most famous attractions is the *«Chengyang Wind and Rain Bridge»*, one of the world's four most famous historical bridges.
- 🏠 • Landmark of Guilin Landscape **Elephant Trunk Hill**: It resembles an elephant drinking water by the riverside, vivid and captivating.
- 🏠 • **Rongshan Lake Scenic Park** which forms a beautiful and elegant city park in the center of Guilin. Explore the 800 years old Banyan tree, and Sun and Moon Pagodas.
- 🏠 • Taking a **night cruise around the Two Rivers and Four Lakes**, bathed in moonlight and lamplight, offers an enchanting and mystical experience reminiscent of a fairyland.

DAY 05 GUILIN ✈️ KUL

(HB/MOB)

- Depart for home.

Remarks:

*MOB=Meals on Board/HB=Hotel Breakfast/LL=Local Lunch/LD=Local Dinner

🕒 Exclusive Arrangement

Disclaimer:

Sequences of itinerary are subject to local arrangement. Itineraries, meals, hotels and transportation are subject to change without prior notice.





Shiwai Taoyuan
世外桃源景区

5天 4晚

山水画廊桂林高端之旅

阳朔 | 龙胜 | 三江

第01天 吉隆坡 ✈️ 桂林

(机上用餐/道地午餐/道地晚餐)

- 抵达桂林, 被誉为“山水甲天下”。
- 前往桂林融创施伯格酒店悠闲, 赏夕阳美景。环抱于卷般山水美景中。

第02天 桂林 - 74KM - 阳朔

(酒店早餐/道地午餐/道地晚餐)

- 🏠 • 世外桃源景区(含游船): 这里是根据陶渊明所著《桃花源记》中绘画的意境, 结合当地的田园山水风光所建的民俗风景区。
- 🕒 • 如意峰景区: 通过缆车、观景平台、如意吊索桥、玻璃栈道等创意设施, 让你俯瞰峰林, 尽情享受“空中花园”, 体验“新十里画廊”的全新玩法。
- 🕒 • 遇龙河竹筏漂流 (VIP2人/竹筏): 随着竹筏一竿一竿的划动, 河面微波荡漾。两岸峰峦层层叠叠, 仿佛一幅画卷在眼前徐徐展开, 美不胜收。
- 享受一场世界著名的演艺秀《千古情》(VIP座), 常设在桂林水面上的舞台, 利用壮丽的山水和灯光, 以音乐、舞蹈、歌唱等形式展现桂林独特的自然风光和深厚的历史文化。

第03天 阳朔 - 170KM - 龙胜 - 65KM - 三江

(酒店早餐/道地午餐/道地晚餐)

- 📷 • 龙脊梯田: 这些梯田高出海平面近 800米, 类似于层叠的草阶, 最初由元代农民建造。

备注:

- 春季 (3月-5月): 翠绿梯田, 勤劳的农民。
- 夏季 (6月-8月): 金黄水稻, 丰收季节。
- 秋季 (9月-11月): 金秋美景, 丰收的季节。
- 冬季 (12月-2月): 白霜覆盖, 宁静如仙境。

每个季节都展现着独特的景色和魅力。需要注意的是, 这些风景因气候和不可控制的因素可能有所变化。

- 🕒 • 黄洛瑶寨(含表演): 在全村60户家庭中, 有60名妇女拥有一米以上的长发, 其中最长者长达1.7米, 因此被誉为天下第一长发村。
- 🕒 • 三江鸟巢 (含做妹三江秀): 独特的鸟巢建筑, 整个建筑古色古香, 充满民族风情, 同时延续了干栏式建筑的传统。



Rongshan Lake Scenic Park
榕杉湖景区

第04天 三江 - 142KM - 桂林

(酒店早餐/道地午餐/道地晚餐)

- 🕒 • 程阳八寨: 由八个自然村屯组成。其中, 最著名的景点之一是世界四大历史名桥之一的“程阳风雨桥”。
- 🏠 • 游览桂林市的山水代表象鼻山: 它酷似一头在江边饮水的大象, 栩栩如生, 引人入胜。
- 🏠 • 榕杉湖景区是一个水体相连的连心湖。以阳桥为界, 东为杉湖, 西为榕湖, 得名于湖岸生长的榕树和杉树。日月双塔座落在杉湖中。
- 🚤 • 夜船游两江四湖, 沐浴在月光和灯火的映照下, 感受那宛如仙境般的神秘氛围。

第05天 桂林 ✈️ 吉隆坡

(酒店早餐/机上用餐)

- 启程回家。

免责声明:

行程次序以当地旅行社安排为准。行程, 膳食, 住宿, 交通等可能会因不可抗拒因素而更动, 恕不另行通知。



Show of Qianqunqing
千古情秀

Must See Attraction



景点地标 深入探索

Carefree
悠游

Enjoy relaxation, truly appreciate the world
享受放松 感慨世界美好

Capture
收获

The color & essence of each journey
旅途中的色彩和精髓

Cozy
温馨

Vibes to create joyful moment together
共创愉悦片刻

如意峰景区

Ruyi Peak Scenic Area



Located 5 km from the picturesque "Shilihualang" with its stunning beautiful landscape. The Ruyi Peak Scenic Area has become a popular destination and highlight in Guilin tourism, capturing the favor of numerous visitors.

在距阳朔奇峰美景、田园秀色、如诗如画的“十里画廊”5公里的地方，一个新晋成为桂林旅游网红打卡地、旅游新亮点的如意峰景区，深受众多游客青睐。



遇龙河竹筏

Bamboo Rafting on the Yulong River

The section from Golden Dragon Bridge to Old Town is considered the highlight of the Yulong River drifting experience. During this journey, you can enjoy the picturesque scenery of green mountains, clear waters, unique peaks, and rural landscapes, immersing yourself in the tranquility and beauty of nature. The ever-changing views along the way make it an unforgettable experience.

金龙桥到旧县段是遇龙河漂流的主要路线，被认为是漂流活动的精华部分。在这段漂流中，你可以欣赏到青山、碧水、奇峰和田园风光，感受大自然的宁静和美丽。这里的景色变化多端，让人流连忘返。



龙脊梯田

Longji Terraces

Present a layered landscape of terraces, like huge green steps, spreading out laterally along the mountain. With varying seasons and lighting conditions, the fields present a myriad of colors, making it a paradise for both photographers and tourists.

呈现出层层叠叠的梯田景观，如巨大的绿色阶梯一般，沿山势横向展开。在不同的季节和光线下，呈现出多彩的景色，是摄影师和游客的天堂。



三江鸟巢

Sanjiang Bird's Nest



You can enjoy a unique cultural and artistic performance in China – the live show "Zuo Mei." It is a spectacular performance that showcases the profound and colorful Dong ethnic song and dance culture. This is also China's first large-scale live performance depicting Dong ethnic customs, garnering numerous accolades.

在这里你可以观赏到中国独特的文化艺术表演 - 《坐妹》实景演出。这是一场精彩绝伦的演出，展示了侗族歌舞文化的博大精深和丰富多彩。它也是中国首部侗族风情大型实景演出，荣获了多项殊荣。

程阳八寨

Chengyang Bazhai



Is a traditional ancient village of dong people. It has won awards such as "Asian Golden Travel Award Most Folk Tourism district", "Beautiful China Top Ten Tourism district" and "National Tourism Standardization Demonstration district". The world-renowned Chengyang Wind and Rain Bridge is situated here and recognized as the largest wind and rain bridge in the world.

是侗族传统古村落群。曾荣获“亚洲金旅奖最具民俗特色旅游县”“美丽中国十佳旅游县”“全国旅游标准化示范县”等奖励。举世闻名的程阳风雨桥就在这里，是世界上规模最大的风雨桥。



象鼻山

Elephant Trunk Hill

A symbol of Guilin, features a solitary, steep shape with ancient rocks. Between the trunk and the legs of the elephant, there is a water and moon cave, which is like a bright moon floating on the water, forming the "Elephant Mountain Water and Moon". This famous scene combines clear mountains, beautiful waters, unique caves, exquisite stones, and reflections, making it a must-visit for tourists in Guilin.

水底有明月，水上明月浮，水流月不去，月去水还流。象鼻山是桂林城的象征，山形孤拔陡峭，岩石古苍。在象鼻与象腿之间有一水月洞，有如一轮明月静浮水上，形成著名的“象山水月”。此景集清山、秀水、奇洞、美石、倒影于一体，成为历代诗人吟咏不绝的千古题材，是游人至桂的必游之地。



夜游两江四湖

Night cruise through the Two Rivers and Four Lakes

Guilin's "Two Rivers and Four Lakes" include the Li River, Taohua River, Mulong Lake, Gui Lake, Rong Lake, and Shan Lake. It's a picturesque landmark with a canal system rivaling Venice. Nighttime boat cruises offer views of highlights like Ancient Banyan Twin Bridges, Glass Bridge, Sun and Moon Pagodas, Solitary Beauty Peak, and Elephant Trunk Hill.

桂林的“两江四湖”包括漓江、桃花江、木龙湖（含铁佛塘）、桂湖、榕湖和杉湖。这是桂林山水的名片之一，拥有与威尼斯相媲美的环城水系。夜游两江四湖，可欣赏古榕双桥、玻璃桥、日月双塔、独脚亭、象鼻山等精华景观。



入住林融创施伯格酒店

Check in Steigenberger Guilin

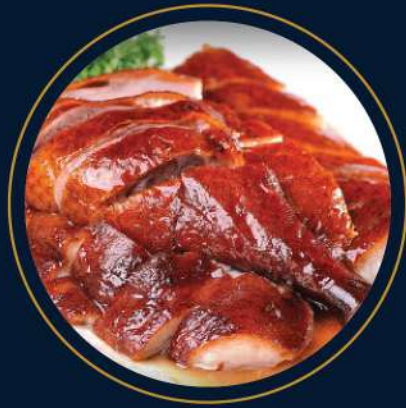


The uniquely designed space blends natural and modern elements, offering a tranquil and luxurious accommodation experience. With a prime location, upscale facilities, and attentive service, it is a truly unforgettable vacation destination.

独特设计融合自然和现代元素，提供宁静奢华的住宿体验。地理位置优越，设施豪华，服务贴心，是一处令人难忘的度假胜地。



Taste Indulge 味蕾



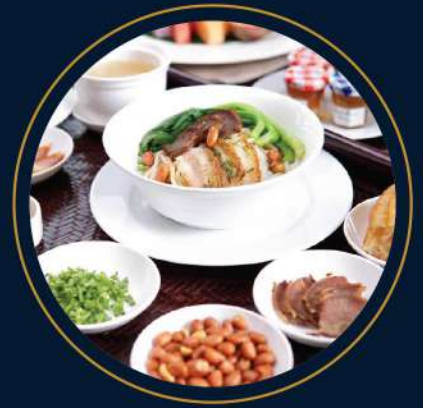
Roast Goose Cuisine
烧鹅风味

The outer skin is crispy, and the goose meat is tender and juicy.
外皮油脆，鹅肉细嫩多汁，而且肉汁香甜，鹅肉和皮之间有一层肥美的脂肪，油润而不肥腻。



Beer Fish Flavor
啤酒鱼风味

This fish is braised with Guilin premium beer, imparting a unique, crispy, and fresh taste.
鱼放入桂林产的上等啤酒红焖而成，具有独特的香酥鲜嫩风味。



Shangri-La Guilin Hotel
桂林香格里拉酒店

A bite of Guilin, this hotel explores every aspect of Guilin's cuisine, turning seemingly ordinary ingredients into extraordinary delicacies.
舌尖上的桂林，这家酒店吃遍桂林风味，不起眼的风物都能做出绝味。

Days 天数	BREAKFAST 早餐	LUNCH 午餐	DINNER 晚餐
1	机上用餐 Meal on board	烧鹅风味 80 Roast Goose Cuisine	桂林融创施柏阁酒店 120 Steigenberger Guilin Hotel
2	酒店早餐 Hotel Breakfast	芋头宴风味 60 Taro Cuisine	啤酒鱼风味 90 Beer Fish Flavor
3	酒店早餐 Hotel Breakfast	龙胜风味 70 Longshen Cuisine	簸箕宴 100 Shaiqi
4	酒店早餐 Hotel Breakfast	三江风味 70 Sanjiang Flavor	桂林香格里拉酒店 258 Shangri-La Guilin Hotel
5	酒店早餐 Hotel Breakfast	机上用餐 Meal on board	-

Experience carefully curated local specialty dishes, savor them firsthand, and immerse yourself in the traditional culture embedded in the ingredients, conveyed through the excitement of your taste buds. Be touched by the chef's skill in preserving the authentic flavors, showcasing a profound love for their homeland.
精心安排的当地特色菜肴，亲自品尝美食，通过味蕾传达的激动，深入探索蕴含在食材中的传统文化。感受到厨师对家乡的深厚情感，呈现出原汁原味的烹饪技艺，让人感动不已。



Accommodation 旅宿

☆☆☆☆☆

Embark on a complete journey at 5-star hotel, offering a quality & comfortable stay.

全程安排五星级酒店，让您在整个旅程中享受到有质量且舒适的住宿环境。



Guarantee Stay And No Similar Hotel 保证入住绝无同级



Steigenberger Guilin



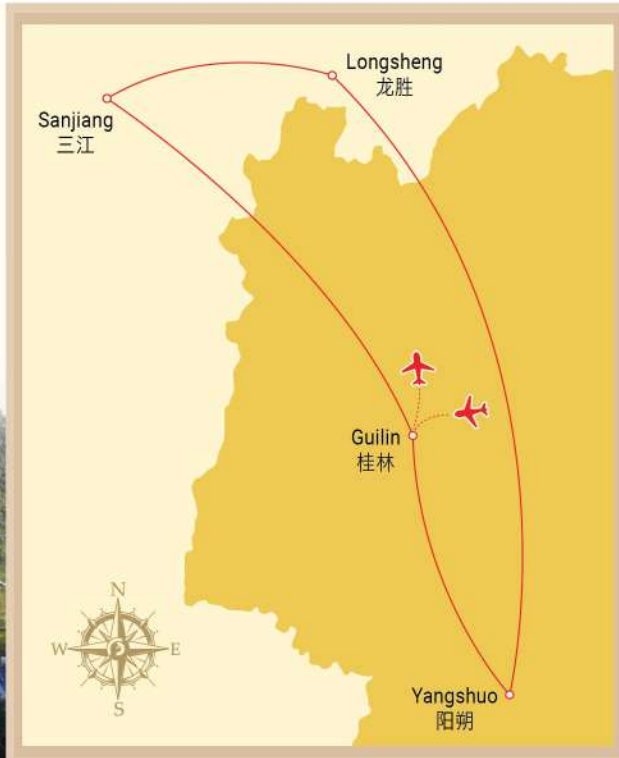
Courtyard by Marriott Liuzhou Sanjiang



Shangri-La Hotel



STAY 留宿	LOCATION 地点	HOTEL 酒店	RATED 等级	REMARKS 备注
2 Nights	Guilin	Steigenberger Guilin	☆☆☆☆☆	Verified reviews score this hotel higher than 99% of accommodations in the city on value for money.
1 Night	Sanjiang	Courtyard by Marriott Liuzhou Sanjiang	☆☆☆☆☆	One of the most outstanding Courtyard by Marriott hotels in local.
1 Night	Guilin	Shangri-La Hotel	☆☆☆☆☆	A magnificent view of the crystal-clear Li River and gorgeous landscaped gardens is right outside your window.



Steigenberger Guilin



GD Partner:

thesignaturetour

The Signature Tour